



Gérance libre SMTI
5-7 Avenue Ferdinand BUISSON
75016 PARIS
Tél: 01.46.20.37.20 - Fax: 01.46.20.34.13

ACCESSOIRES ADAPTABLES AUX VENTILATEURS

TYPE VP560 à VP1000 CUBIQUE
PLAN D'ASSEMBLAGE N° 21097

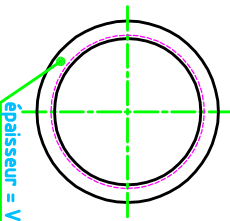
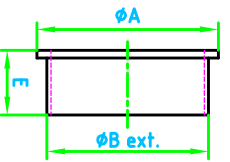
N° : **20553/J**

C : 000

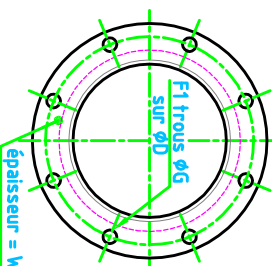
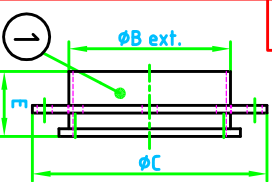
le : 06/01/11

		COTES COMMUNES										COTES DES SIMPLES OUIES				COTES DES DOUBLES OUIES				VENTILATEUR								
TYPE	A	B	C	D	E	F1	G	H	J	M	R	S	T	U	V	W	Y	F2	K	N	O	P	F3	K	N	O	P	TYPE
VP 560x255	580	560	630	600	100	16	11	60	712	812	5	152	60	M10	1,5	3	2	16	399	499	3	149,5	16	760	854	3	268	VP 560x255
VP 560x290	580	560	630	600	100	16	11	60	712	812	5	152	60	M10	1,5	3	2	16	434	534	3	161,5						VP 560x290
VP 630x255	650	630	700	670	100	18	11	60	802	902	5	170	60	M10	1,5	3	2	16	419	519	3	156,5	18	807	901	4	213	VP 630x255
VP 630x320	650	630	700	670	100	18	11	60	802	902	5	170	60	M10	1,5	3	2	16	484	584	3	178						VP 630x320
VP 710x290	720	700	770	740	100	18	11	60	902	1002	5	190	60	M10	1,5	3	2	16	463	563	3	171	18	926	1018	4	242	VP 710x290
VP 710x360	720	700	770	740	100	18	11	60	902	1002	5	190	60	M10	1,5	3	2	16	539	639	3	196,5						VP 710x360
VP 800x320	820	800	870	840	100	18	11	60	1002	1102	5	210	60	M10	1,5	3	2	16	510	610	3	186,5	18	998	1090	4	260	VP 800x320
VP 800x405	820	800	870	840	100	18	11	60	1002	1102	5	210	60	M10	1,5	3	2	16	597	697	3	215,5						VP 800x405
VP 900x360	920	900	970	940	100	18	13	60	1122	1242	5	236	60	M10	1,5	3	2	18	574	694	4	158,5	18	1126	1238	4	294,5	VP 900x360
VP 900x405	920	900	970	940	100	18	13	60	1122	1242	5	236	60	M10	1,5	3	2	18	622	742	4	170,5						VP 900x405
VP 1000x405	1020	1000	1070	1040	100	18	13	60	1252	1372	5	262	60	M10	1,5	3	2	18	638	758	4	174,5	18	1266	1378	4	329,5	VP 1000x405
VP 1000x505	1020	1000	1070	1040	100	18	13	60	1252	1372	5	262	60	M10	1,5	3	2	18	738	858	4	199,5						VP 1000x505

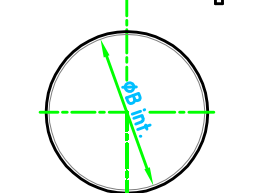
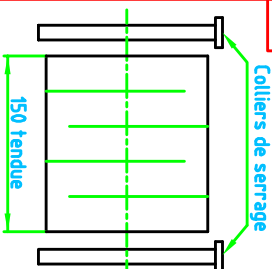
1 Colletterte à l'aspiration



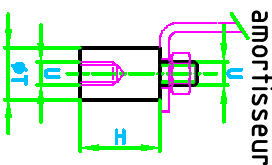
2 Bride et contre bride tournante à l'aspiration



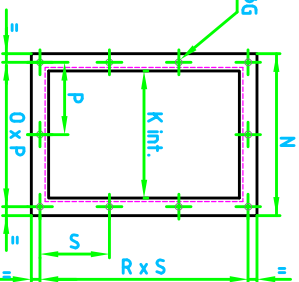
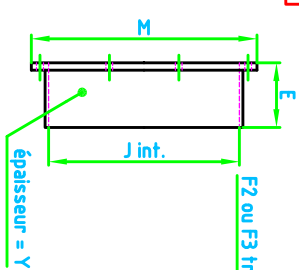
3 Manchette souple à l'aspiration



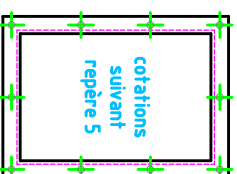
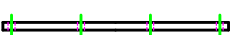
4 Plots amortisseurs



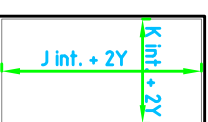
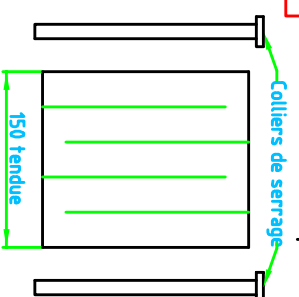
5 Contre cadre au refoulement



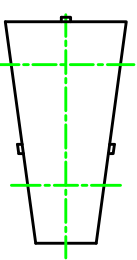
6 Cadre au refoulement partie intégrante de l'appareil



7 Manchette souple au refoulement



8 Carter transmission suivant moteur SOC - VAC - DOC



Plan : N° 20409-20410-20590

VENTILATEUR

COTES COMMUNES

COTES DES SIMPLES OUIES

COTES DES DOUBLES OUIES

VENTILATEUR